



**Public Information Centre 3 Summary
Report**

Schneider and Shoemaker Creek
Naturalization Environmental
Assessment

February 21, 2024

Prepared for:
City of Kitchener

Prepared by:
Stantec Consulting Ltd.
100-300 Hagey Boulevard
Waterloo, ON
N2L 0A4

Project Number:
161414319

Limitations and Sign-off

The conclusions in the Report titled Public Information Centre 3 Summary Report are Stantec’s professional opinion, as of the time of the Report, and concerning the scope described in the Report. The opinions in the document are based on conditions and information existing at the time the scope of work was conducted and do not take into account any subsequent changes. The Report relates solely to the specific project for which Stantec was retained and the stated purpose for which the Report was prepared. The Report is not to be used or relied on for any variation or extension of the project, or for any other project or purpose, and any unauthorized use or reliance is at the recipient’s own risk.

Stantec has assumed all information received from City of Kitchener (the “Client”) and third parties in the preparation of the Report to be correct. While Stantec has exercised a customary level of judgment or due diligence in the use of such information, Stantec assumes no responsibility for the consequences of any error or omission contained therein.

This Report is intended solely for use by the Client in accordance with Stantec’s contract with the Client. While the Report may be provided to applicable authorities having jurisdiction and others for whom the Client is responsible, Stantec does not warrant the services to any third party. The report may not be relied upon by any other party without the express written consent of Stantec, which may be withheld at Stantec’s discretion.

Prepared by:	Reviewed by:
<hr/>	<hr/>
Signature	Signature
Katie Murray, B.A. Environmental Consultant	Ferenaz Raheem, MES RPP MCIP Senior Environmental Planner
<hr/>	<hr/>
Printed Name and Title	Printed Name and Title

Reviewed by:	Approved by:
<hr/>	<hr/>
Signature	Signature
Heather Amirault, P.Eng. Stream Restoration Engineer	Steve Brown MBA, P.Eng. Surface Water Lead, Canada East
<hr/>	<hr/>
Printed Name and Title	Printed Name and Title



Executive Summary

The Project has completed Phase 3 of the Class EA process. In this Phase, the Project Team identifies and evaluates alternative design concepts. This report is a summary of the comments received from the Public Information Centre #3. This included four (4) alternative design concepts.

The evaluation of alternatives included consideration of:

- natural environmental
- socio-economic
- cultural environment
- technical environment

Several consultation activities were undertaken through Phase 3 including:

- Notice of Public Information Centre sent to stakeholders, residents, and registrants (online/ in-person)
- posting of the Notice on the City's Project website
- posting in the local newspaper
- updating the Project website with consultation materials
- hosting an in-person Public Information Centre

The work undertaken in Phase 3 developed alternative design concepts. Consultation confirmed the following as the preferred design concept that will move forward:

“Naturalized Creek with Multi-Use Trail along a combination of the North and South side of Schneider Creek with Trail Amenity Features (up to Three) and West side of Shoemaker Creek.”

The next step is to move forward with the Phase 4 of the Class EA process.



Table of Contents

Limitations and Sign-off	i
Executive Summary	ii
1 Introduction	1
2 Public information Centre #3	2
2.1 Purpose	2
2.2 City of Kitchener Engage Page	2
2.3 Notice of Public Information Centre #3	2
2.4 Format	3
2.5 Attendance	4
3 Summary of Comments Received	5
4 Next Steps 10	

List of Tables

Table 1: Notice #3 Distribution	3
---------------------------------------	---

List of Figures

Figure 1: Study Area	1
Figure 2: Comment Received	9

List of Appendices

Appendix A	Notice of PIC 3
Appendix B	Display Boards
Appendix C	Information Sheet



1 Introduction

The City of Kitchener is undertaking a Class Environmental Assessment (EA) to review the environmental risks of Schneider and Shoemaker Creeks and present design options to mitigate those risks. Schneider and Shoemaker Creeks are currently lined with concrete at their confluence, and the floodplain at this location is past the concrete boundaries; this floodplain extent affects adjacent properties and presents a risk to public safety during flood events. Naturalizing the creek systems to accommodate increased flows can reduce risk to public safety and provide environmental benefits such as flood mitigation and natural habitat. In addition to the replacement of the concrete channel with a wider, naturalized channel, this project will endeavor to improve public safety by managing flood risks and reducing potential damage as a result of flooding from larger storm events.

The study area for the Schneider and Shoemaker Creeks (the Creeks) Naturalization EA is shown below in Figure 1.



Figure 1: Study Area



2 Public information Centre #3

2.1 Purpose

The purpose of the third Public Information Centre (PIC) was to identify alternative design concepts for naturalizing the Creeks, present the evaluation of alternative design concepts, and gather input to confirm the preferred alternative design. The PIC is a requirement of the regulatory process for the Municipal Engineer's Association Class EA (Class EA). The Class EA process was also shared and discussed at the PIC.

2.2 City of Kitchener Engage Page

The City of Kitchener Engage Page (www.engagewr.ca/SchneiderCreekEA) is a central location where all PIC materials are available for the public to view and provide feedback in the event they were not able to attend the meeting or wanted to revisit the information presented. The Notice of PIC #3 (Notice) was posted on the website on December 1, 2023, along with the registration form and further details about the PIC. A copy of the Notice is included in **Appendix A**. The materials that were presented at the PIC were included on the Engage Page on December 15, 2023, including the display boards (**Appendix B**) and photos of the comments on the Alternative Boards that were provided in-person at the PIC. The Engage Page also includes the Project's team contact information and the current status of the timeline of the project. Details and summary of comments can be found in Section 3 of this report.

2.3 Notice of Public Information Centre #3

The Notice for the EA was issued on December 1, 2023. The intent of the Notice was to inform readers about the purpose and format of the PIC, and to outline how to attend the PIC in person. Project team member contact information was provided in the Notice along with the project website address (provided in Section 2.2).

Interested persons were encouraged to attend the PIC in-person, view the project website, and/or to contact the Project Team directly should they have any comments, questions, concerns, or wish to be added to the study mailing list.

The Notice was distributed to the residents within a 1 km radius of the project site, agencies, municipal staff, elected officials, and Indigenous communities through the 4 (four) methods outlined in **Table 1** below.



Table 1: Notice #3 Distribution

Method of Distribution	Date of Distribution
Notice mailed via Canada Post to the study contact list	December 1, 2023
Notice emailed to the study contact list	December 1, 2023
Advertisement in the local newspaper (Kitchener Record)	December 1, 2023, and December 8, 2023
Posted on City of Kitchener Engage Page	December 1, 2023
Posted on Project site via Neighbourhood sign	December 1, 2023

2.4 Format

The PIC was an in-person event held at the Rockway Golf Club in Kitchener, Ontario on December 12, 2023, from 5:00pm to 8:00pm including a short presentation introducing the project team and describing the layout of the room, how to ask questions, and how to provide feedback. It was announced that the display boards would be made available on the project website. There was an opportunity for attendees to view display boards (**Appendix B**) throughout the meeting room. There was a total of 18 display boards throughout the room describing the project background, purpose of the PIC, the Class EA process, the evaluation criteria, the four (4) alternative design concepts, the preliminary preference, and next steps. The Project Team, which included members of the City of Kitchener and Stantec Consulting Ltd. (Stantec), were on hand to discuss the information with the attendees and to answer questions. An information sheet (**Appendix C**) for the project was offered to each attendee, comment sheets were available for attendees to write down their comments to be submitted, and a handout of the display boards was available in Spanish, Portuguese, and Arabic. There were no requests received for translated materials.

REEP Green Solutions had a display table, and a representative was present to discuss basic drainage principles to mitigate flooding and their Rain Smart Neighbourhoods program.

Alternatively, there was an option to participate online by reviewing the presentation materials from the PIC and completing the Alternative Design Options Survey on the Engage page. The survey was open from December 23rd, 2023 until January 2nd, 2024.



2.5 Attendance

Attendees were encouraged to sign in at the PIC before proceeding to view the display boards with an option to be added to the email distribution list. A total of 67 attendees signed in with 32 attendees requesting to be added to the email distribution list. Councillor Debbie Chapman from Ward 9 was in attendance . For the Engage page between December 12th, 2023 until January 2nd, 2024 there were a total of 212 visits with a maximum of 32 visitors per day. There were 11 engaged visitors and 10 of those participated in the survey. There were a total of 67 informed visitors with 54 downloaded documents, 1 video viewed, 1 key dates page was visited, 7 visited the FAQ list page and 39 visited multiple project pages. There were 119 aware visitors which includes participants visiting at least one page. There were zero (0) new registrations.



3 Summary of Comments Received

The comments received from attendees, feedback written on the Alternative Boards and any communications via project email, the Engage Page and the Alternative Design Options Survey that were received up to December 31 2023, are summarized below. The City of Kitchener and Stantec representatives heard:

- Inquiries around property loss impacts, specifically the properties on Nyberg St.
 - **Response:** There will not be any property loss impacts for residential properties, including those on Nyberg St.
- Inquiries regarding if current road crossings and infrastructure will be retained
 - **Response:** Current road crossings will not be changed
- Request to leave the area as is, stating there is no flooding in the areas around the creek where the resident lives and visits
 - **Response:** One of the main project goals is mitigation of existing flood risk and mitigation against future flood risks that could be associated with climate change. The City is being proactive to mitigate risks before they occur. The proposed approach will also create additional benefits, including enhancing aquatic and terrestrial environments, improving recreational amenities (Iron Horse Trail (IHT)), and providing additional greenspace in the neighbourhood.
 - **Response:** There have also been numerous residents who have confirmed recent storm events that have completely filled up the channel in the project area
- Inquired if the existing vegetation could remain and be maintained
 - **Response:** Existing vegetation has been mapped as part of the background investigations and will be considered at detailed design. Design plans will incorporate revegetation plans.
- Concerns regarding the stability of the natural channel to be implemented and inquiries regarding the materials that would be used and how it would contribute to the channel's stability
 - **Response:** Engineering design will incorporate structures to maintain the stability of the natural channel. This will be determined during detailed design, but it is expected that the structures will consist of natural materials (rock, wood/logs)
- Inquiries around timeline of the Project (when will it start, construction phases and completion)



- **Response:** Field work continuing throughout fall 2023, Phase 4: Environmental Study Report (Winter 2024), Detailed design and permitting (2024-2025), construction (2025-2026)
- Overall impacts to the IHT or Light Rail Transit
 - **Response:** IHT and Light Rail Transit routes will be maintained however temporary detours to the IHT may be required during construction.
- Inquiries around how the project will reduce flood risks to various nearby properties
 - **Response:** The highest-risk areas for flooding are called floodways. Reducing the extent of the floodway around Schneider Creek requires more room for the creek to flow unimpeded during storms. We do this by increasing the channel width and removing the buildings in the channel. Flood risk will be reduced throughout the study area as we begin to do this.

The Boards which presented each Alternative Design Concept included spaces for visitors to respond directly to the details presented. Visitors also had a chance to place a dot to represent their vote for which alternative they preferred. Below is a summary of comments and votes received from the PIC and Alternative Design Options survey on Engage:

- Alternative 1a: Multi-Use Trail along the south Side of Schneider Creek and East Side of Shoemaker Creek
 - Zero votes (0) votes
 - Concerns that no trail connection is being maintained and about the on-road biking and walking section
 - Prefer not to have a pedestrian crossing over Shoemaker Creek and lack of trail connection to Sydney Street
 - A straight-forward path route is appreciated
 - Maximize re-naturalized areas
 - Makes use of roads running parallel and perpendicular to the creek to provide regions of interaction
 - Opens up future re-naturalization of regions north of the existing trail, where the floodplain exists
 - No access to the creek limits interaction with nature
 - Concerns around cost due to removing the existing trail
- Suggestions for safety measures. Please use heavily marked signage for single-line cycling and speed limits.



- Alternative 1b: Naturalized Creek with Multi-Use Trail along the South side of Schneider Creek with Trail Amenity Features (up to three) and Trail East side of Shoemaker Creek
 - Three (3) votes
 - Suggestion to extend the trail south of Shoemaker Creek
 - Appreciation for the opportunity to interact with nature
 - Makes use of roads running parallel and perpendicular to the creek to provide areas for interaction
 - Maximizes area of restored vegetation
 - Suggestion to have the section between Sydney and Ottawa a part of the trail
 - Concerns around cost due to removing the existing trail
 - Suggestions regarding safety measures (single file cycling, heavily marked signage, speed limits)
- Alternative 2a: Naturalized Creek with Multi-Use Trail along a Combination of the North and South side of Schneider Creek and West side of Shoemaker Creek
 - Two (2) votes
 - Preference for off road trails
 - Request to retain all houses that are close to the creek
 - Extend the trail along Shoemaker Creek during future developments
 - Appreciation for the trail continuing along Sydney Street and relatively straight lines of the trail system
 - Appreciation for maintaining existing trail and providing naturalized connection to Sydney Street and new trail along the golf course
 - Request to include park space for children to play
 - Concerns around the net benefit of the floodplain due to the region north of the creek that is unaltered
 - Request to include Delta Street as part of the bike pathway
- Alternative 2b: Naturalized Creek with Multi-Use Trail along combination of the North and South side of Schneider Creek and West side of Shoemaker Creek and added Trail Amenity Features (up to three)
 - Five (5) votes
 - Support of the new trail alignment compared to the other alternatives
 - Strong support of amenities as long as social safety (i.e., lighting, accessibility for all) can be addressed



Public Information Centre 3 Summary Report

3 Summary of Comments Received

February 21, 2024

- To resize the culvert on Kent Ave
- A natural connection to Sydney St. S and new trail to Rockway
- Suggestion of adding playground structure to the amenity spaces
- Evenly-spaced seating area
- Suggestion of not removing the existing trail
- Request to widen the trail
- Appreciates the culverts being kept as it will reduce costs
- Using existing trail reduces costs but concerns about the net impact of floodplain management
- Appreciate the lower cost compared to Alternative 1a and the attraction to more users
- Request for a trail connection between Sydney Street and Delta Street
- Concerns around the ‘look out’ infrastructure as it could increase water velocity and increase maintenance costs. Suggestion to replace this amenity with a step-down feature
- Suggestion of adding ‘tofu rocks’ to assist with erosion control
- Suggestion to move the lookout feature to above the existing culvert
- Request for a walking tour with project team of the features
- Add additional signage to show the height of the floodplain water during a storm
- Concerns for the lack of washroom amenities

Below is a representation (Figure 2) of what methods the comments were received by.



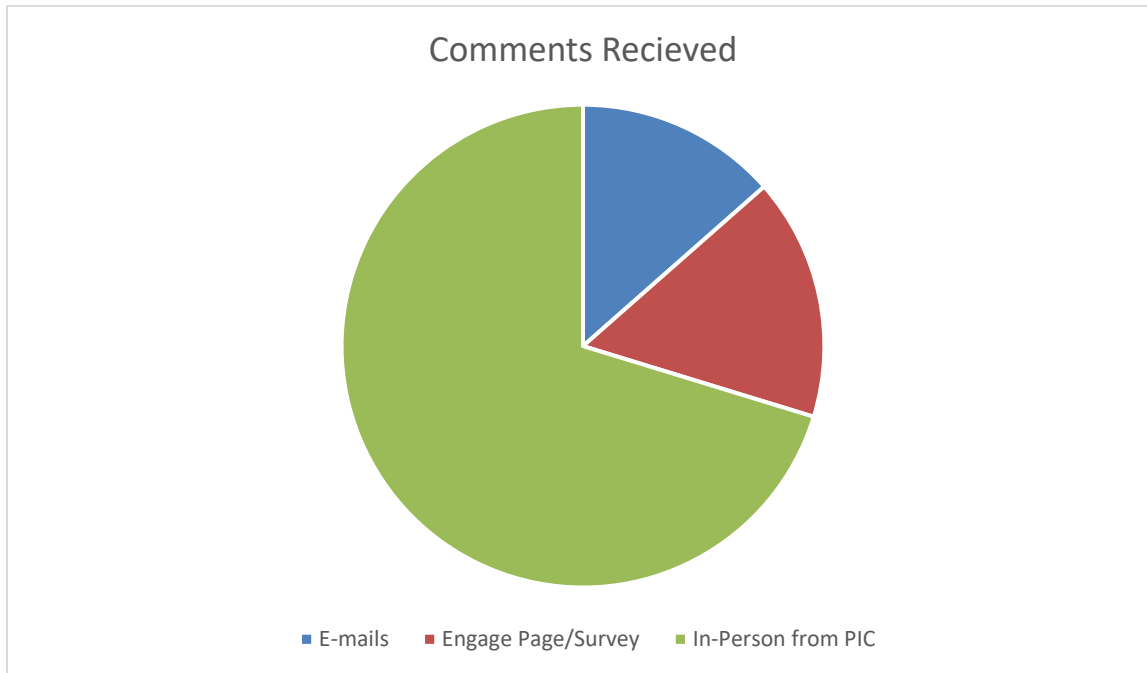


Figure 2: Comment Received



4 Next Steps

The presentation boards from PIC#3 are available on the project website. The Project Team have reviewed comments received during PIC#3. Results of consultation confirms the Preferred Alternative Design Concept is Alternative 2b. The next step in the Class EA process is Phase 4: Environmental Study Report. This Report will be posted to the Project website. The following field work will occur throughout 2024:

- topographic survey
- subsurface utility exploration
- geotechnical assessment
- hydrogeological assessment
- soil assessment



Appendices



Appendix A Notice of PIC 3

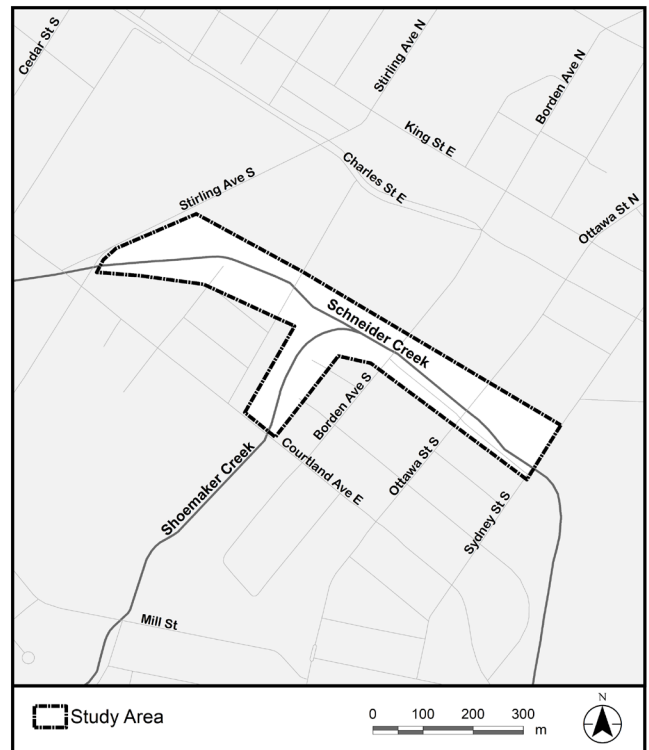


NOTICE PUBLIC INFORMATION CENTRE #3

Schneider and Shoemaker Creeks Naturalization Environmental Assessment

Schneider and Shoemaker Creeks are currently lined with concrete where they meet and the floodplain at this location extends past the creek boundaries. This affects adjacent properties and presents a potential risk to public safety.

The City of Kitchener has initiated a *Municipal Class Environmental Assessment*, Schedule "C", to fully review the environmental risks of this area, and present alternative solutions to mitigate those risks. At the Public Information Centre #2, the recommended Alternative Solution for full naturalization had the highest support. Expanding and naturalizing the creek boundaries to accommodate the flows will provide greater protection, and environmental benefits such as flood mitigation and natural habitat. In addition to the replacement of the concrete channel with a wider natural channel, this project will reduce potential flood risks to adjacent properties from larger storm events.



Public Information Centre #3 (Final)

As part of this study, consultation is being undertaken and your participation is encouraged. A third and final Public Information Centre (PIC) is being planned to share the different alignment options of the naturalized creeks, alignment of the Iron Horse Trail, the evaluation criteria and the evaluation of the alternative designs that will guide the remainder of the project. The results of the evaluation of environmental effects for each alternative along with the recommended solution will be presented.

Public Information Centre #3

December 12, 2023, 5:00pm – 8:00pm

(December 13, 2023, in case of inclement weather)

Rockway Golf Course, 625 Rockway Drive, Kitchener

Project website: www.engagewr.ca/SchneiderCreekEA

We'd like to hear from you!

Your input is important to us and can help shape the Project decision. We invite you to join our upcoming PIC to learn more about the alternative solutions, ask our team questions, and provide feedback. Listening to, and learning from, Indigenous Nations, residents, and stakeholders is part of the process.

The PIC will offer activities for children with childminding services available and light refreshments and snacks. Please visit the project website link above to R.S.V.P. to the PIC where you may indicate dietary restrictions and the number of children attending. If you are unable to attend the PIC, the presentation boards will be made available on the Project website.

Contact us if you would like to learn more about the Project, be added to the Project mailing list, provide comments, or have any accessibility requests:

Chris Nechacov, C.E.T.
Design & Construction Project Manager
City of Kitchener
Tel: 519-741-2200
Email: schneidercreekea@kitchener.ca

Steve Brown, MBA, P.Eng.
Project Manger
Stantec Consulting Ltd.
Tel: 519-585-7446
Email: schneidercreekea@stantec.com

This notice was issued on **December 1, 2023.**

All personal information included in your request – such as name, address, telephone number and property location – is collected, under the authority of section 30 of the *Environmental Assessment Act* and is collected and maintained for the purpose of creating a record that is available to the general public. As this information is collected for the purpose of a public record, the protection of personal information provided in the *Freedom of Information and Protection of Privacy Act* (FIPPA) does not apply (s.37). Personal information you submit will become part of the available public record unless you request that your personal information remain confidential.

Appendix B Display Boards



WELCOME

PUBLIC INFORMATION CENTRE #3 Schneider and Shoemaker Creek Naturalization Environmental Assessment

**December 12, 2023
Rockway Golf Club
625 Rockway Dr. Kitchener, ON
5pm – 8pm**



Please pick up an information sheet
See staff for slide package in Portuguese, Spanish and Arabic
Project website: www.engagewr.ca/SchneiderCreekEA



Purpose of this Public Information Centre (PIC) and Background Studies



The purpose of this PIC is to:

- Present alternative design concepts
- Evaluate the alternative designs and share our preferred design
- Seek feedback from the community on each design concept

Background Studies results:

- There are significant flood risks at both creeks
- There is poor water quality and natural habitat at both creeks
- There is a need for more green space and trail connections in the neighbourhood



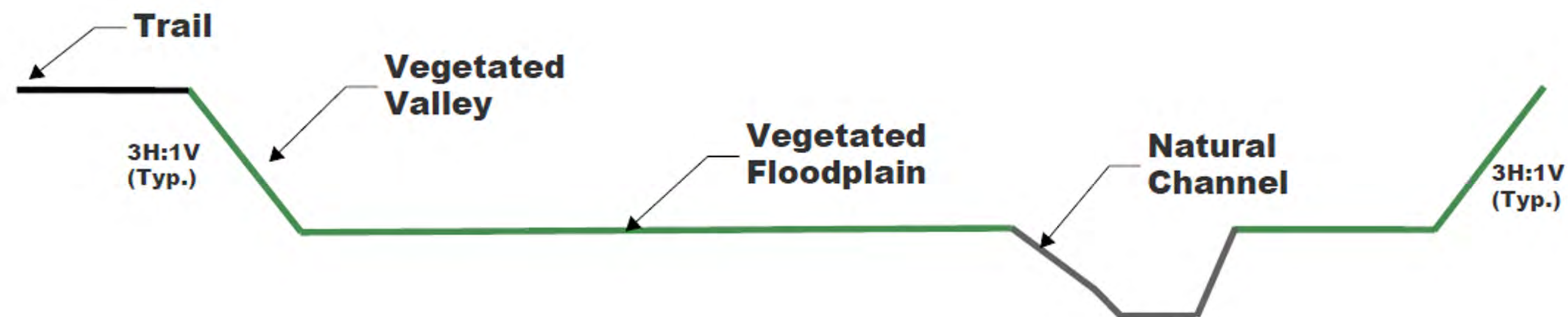
Recap of Public Information Centre #2

Opportunity for Naturalization:

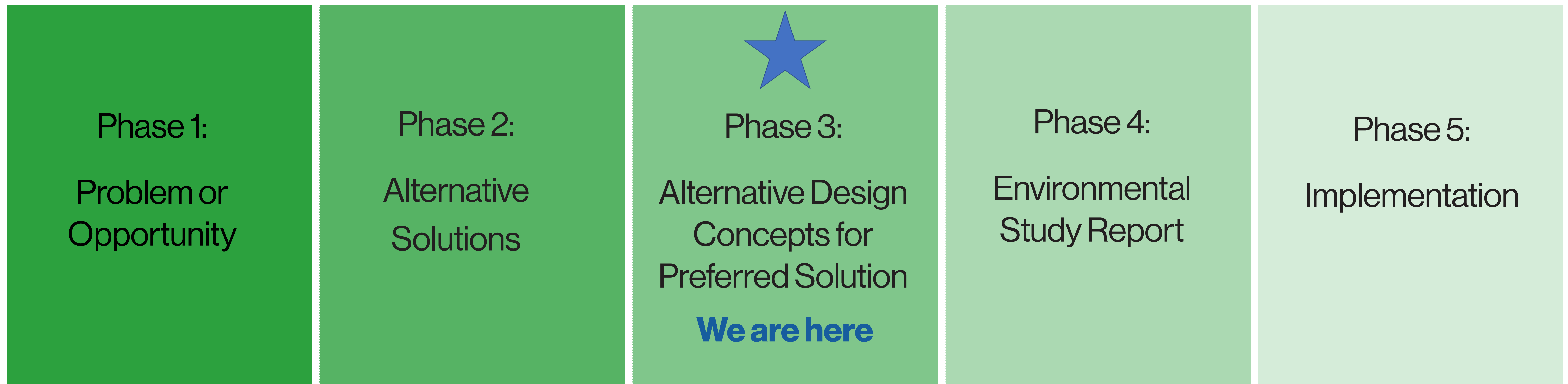
- Design a solution to naturalize the creek corridors which achieve the following objectives:
- Reduce flooding impacts
- Improve natural environment
- Create recreational spaces to enjoy the natural elements of the creek

PIC 2 presented 4 Alternative Solutions:

- Alternative 1: “Do Nothing”
- Alternative 2: Concrete Channel with Naturalized Valley Bottom
- Alternative 3: Natural Channel with Retaining Structure at One or Both Valley Walls
- Alternative 4: Natural Channel and Valley – **PREFERRED**



Municipal Class Environmental Assessment Process



Consultation Throughout




City of Kitchener Stormwater Management Work




DMAF Project Elements

-  Bridgeport Dyke
-  Stream Restoration Projects
-  Creek Naturalization (Schneider and Shoemaker Creeks)
-  Natural Areas and Trails (Walter Bean Trail)
-  New Facility Park Retrofits
-  Road Reconstruction (WIP)



Non-DMAF

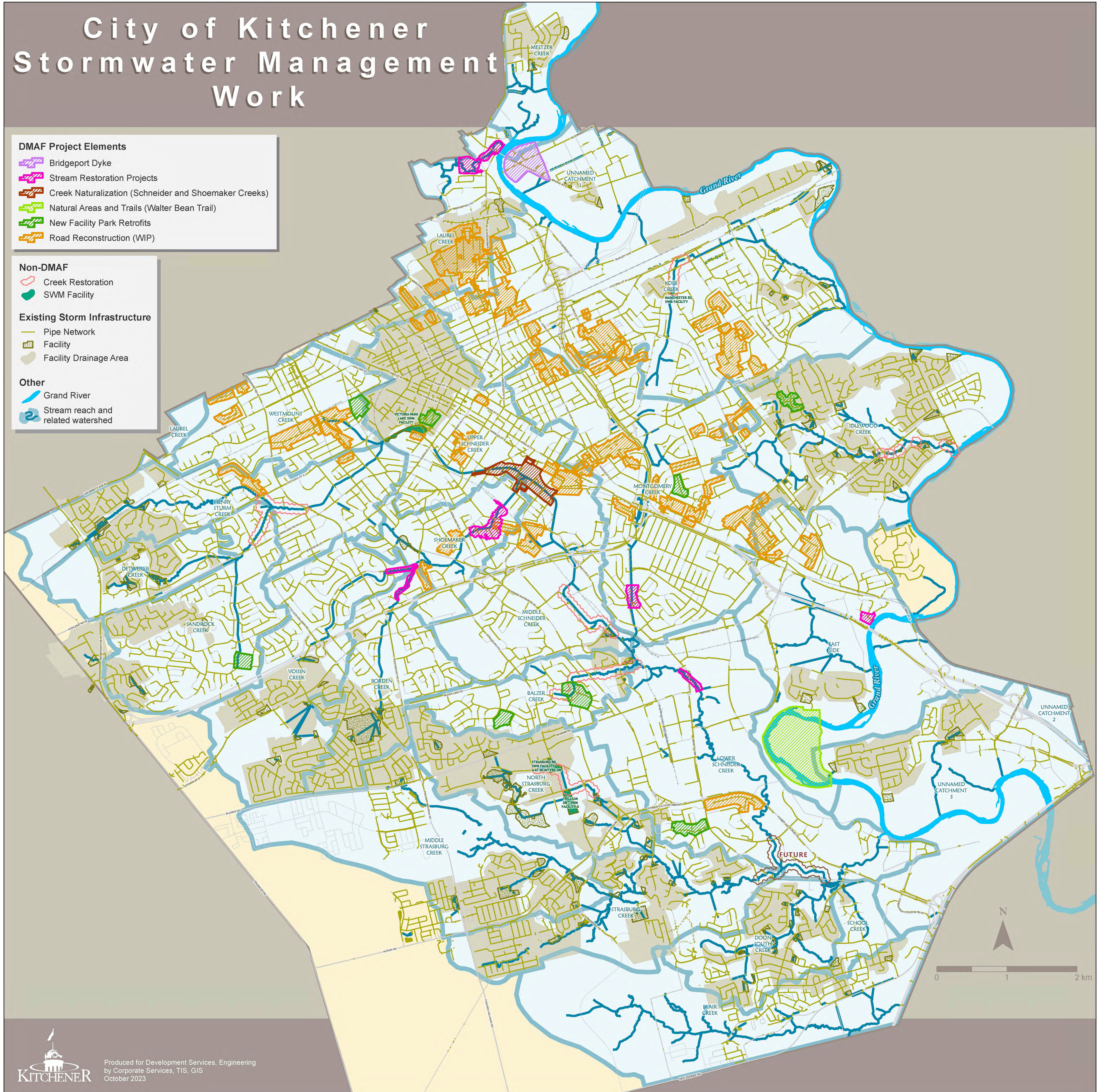
-  Creek Restoration
-  SWM Facility

Existing Storm Infrastructure

-  Pipe Network
-  Facility
-  Facility Drainage Area

Other

-  Grand River
-  Stream reach and related watershed

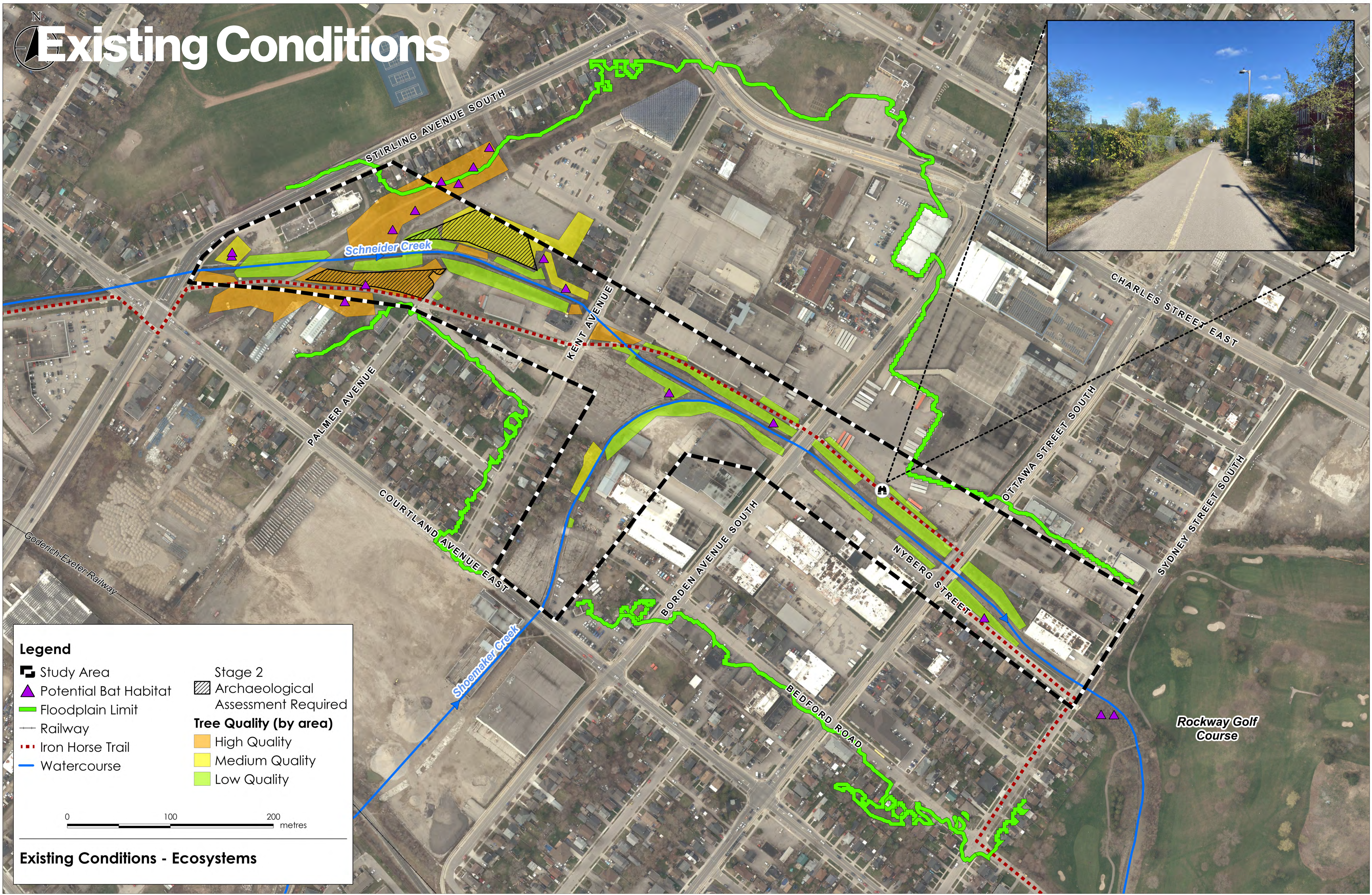


Study Area



1. Base features produced under license with the Ontario Ministry of Natural Resources and Forestry © King's Printer for Ontario, 2023. 2. Orthoimagery © First Base Solutions, 2023. Date of Imagery 2022.

Existing Conditions



Legend

- Study Area
- Potential Bat Habitat
- Floodplain Limit
- Railway
- Iron Horse Trail
- Watercourse

Stage 2

- Archaeological Assessment Required

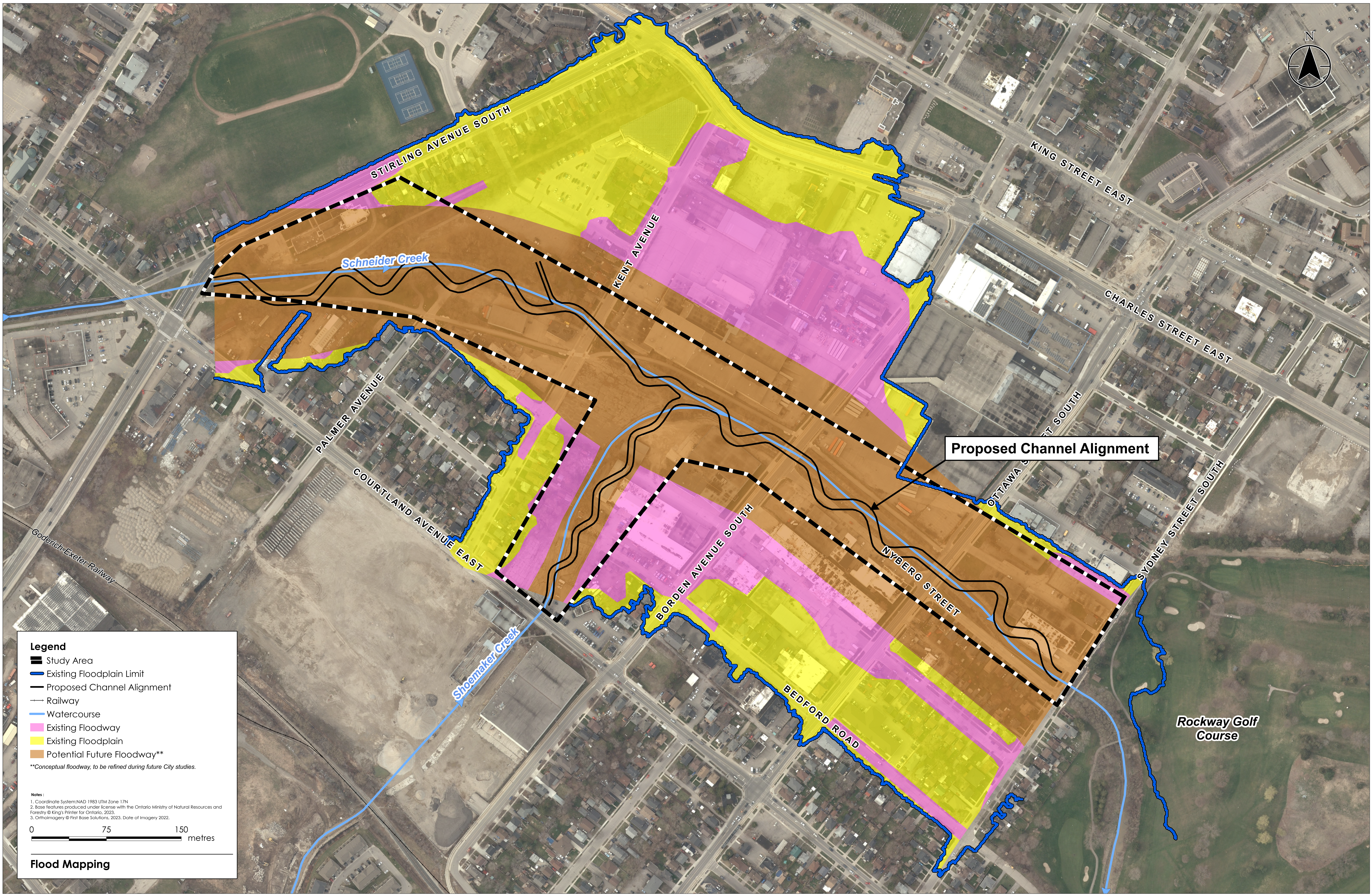
Tree Quality (by area)

- High Quality
- Medium Quality
- Low Quality

0 100 200 metres

Existing Conditions - Ecosystems

1. Base features produced under license with the Ontario Ministry of Natural Resources and Forestry © King's Printer for Ontario, 2023. 2. Orthoimagery © First Base Solutions, 2023. Date of Imagery 2022.



Legend

- Study Area
- Existing Floodplain Limit
- Proposed Channel Alignment
- Railway
- Watercourse
- Existing Floodway
- Existing Floodplain
- Potential Future Floodway**

**Conceptual floodway, to be refined during future City studies.

Notes:

1. Coordinate System: NAD 1983 UTM Zone 17N
2. Base features produced under license with the Ontario Ministry of Natural Resources and Forestry © King's Printer for Ontario, 2023.
3. Orthoimagery © First Base Solutions, 2023. Date of Imagery 2022.

0 75 150
metres

Flood Mapping

Evaluation Criteria

NATURAL
ENVIRONMENT

SOCIO-ECONOMIC
& CULTURAL
ENVIRONMENT

TECHNICAL
ENVIRONMENT

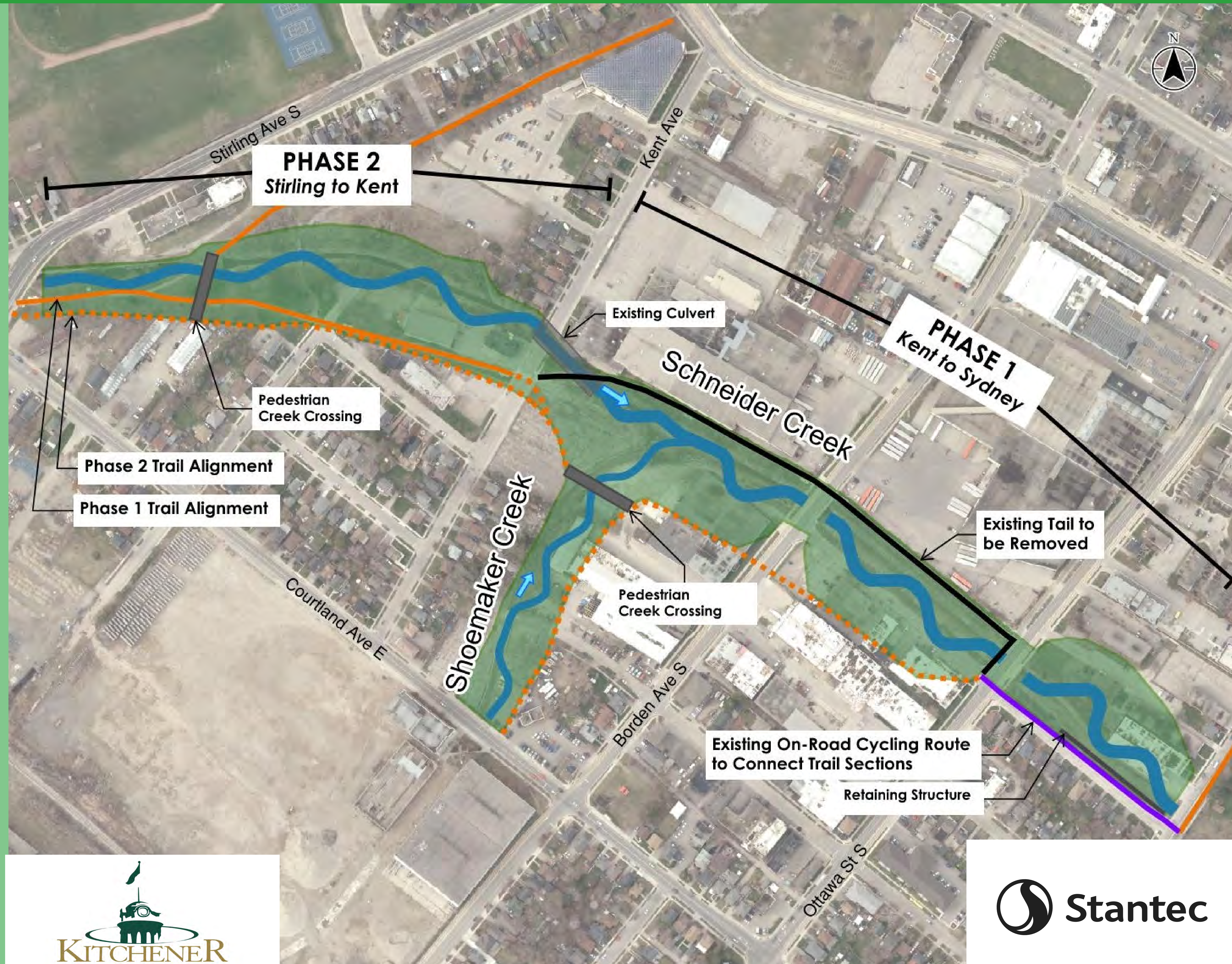


Alternative 1a: Multi-Use Trail along the South Side of Schneider Creek and East Side of Shoemaker Creek

- This option has 2 pedestrian creek crossings:
 - Schneider Creek between Stirling Ave and Kent St
 - Shoemaker Creek
- No multi-use trail between Ottawa St. and Sydney St.
- Maintain existing on-road cycling route on Nyberg St.
- Remove existing trail along the north side of Schneider Creek between Kent Ave. and Bordon Ave.
- Added cost for pedestrian creek crossings

What do you like about this alternative?

What don't you like about this alternative?



Alternative 1b: Naturalized Creek with Multi-Use Trail along the South side of Schneider Creek with Trail Amenity Features (Up to Three) and Trail East side of Shoemaker Creek

- Adds amenity features to the Alternative 1a alignment
- Amenity could include seating and step-down area for public access to greater connect with nature
- Costs more than Alternative 1a because of amenities
- Will consider safety because of access into the valley (example: high flow, ticks)

What do you like about this alternative?

What don't you like about this alternative?



Alternative 2a: Naturalized Creek with Multi-Use Trail along a Combination of the North and South Side of Schneider Creek and West side of Shoemaker Creek

- Matches the trail alignment of Alternative 1a at the upstream part of the study area
- Pedestrian creek crossing of Schneider Creek will replace an existing culvert crossing
- Maintains the current Iron Horse Trail between Kent Ave. and Ottawa St.
- Remove the on-road cycling route along Nyberg St. and fill in the existing gap with a new section of trail

What do you like about this alternative?

What don't you like about this alternative?

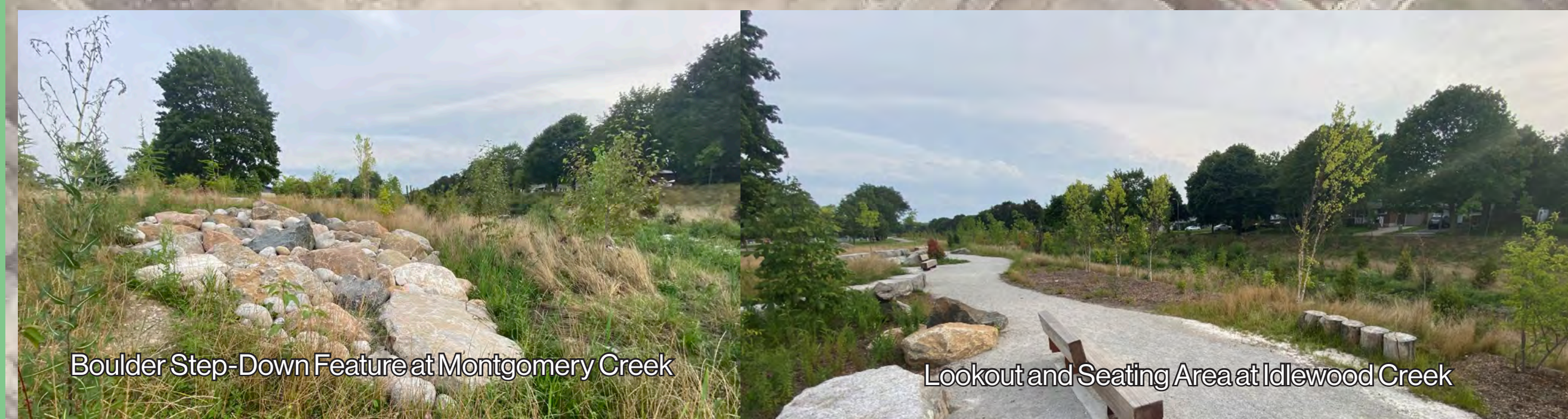
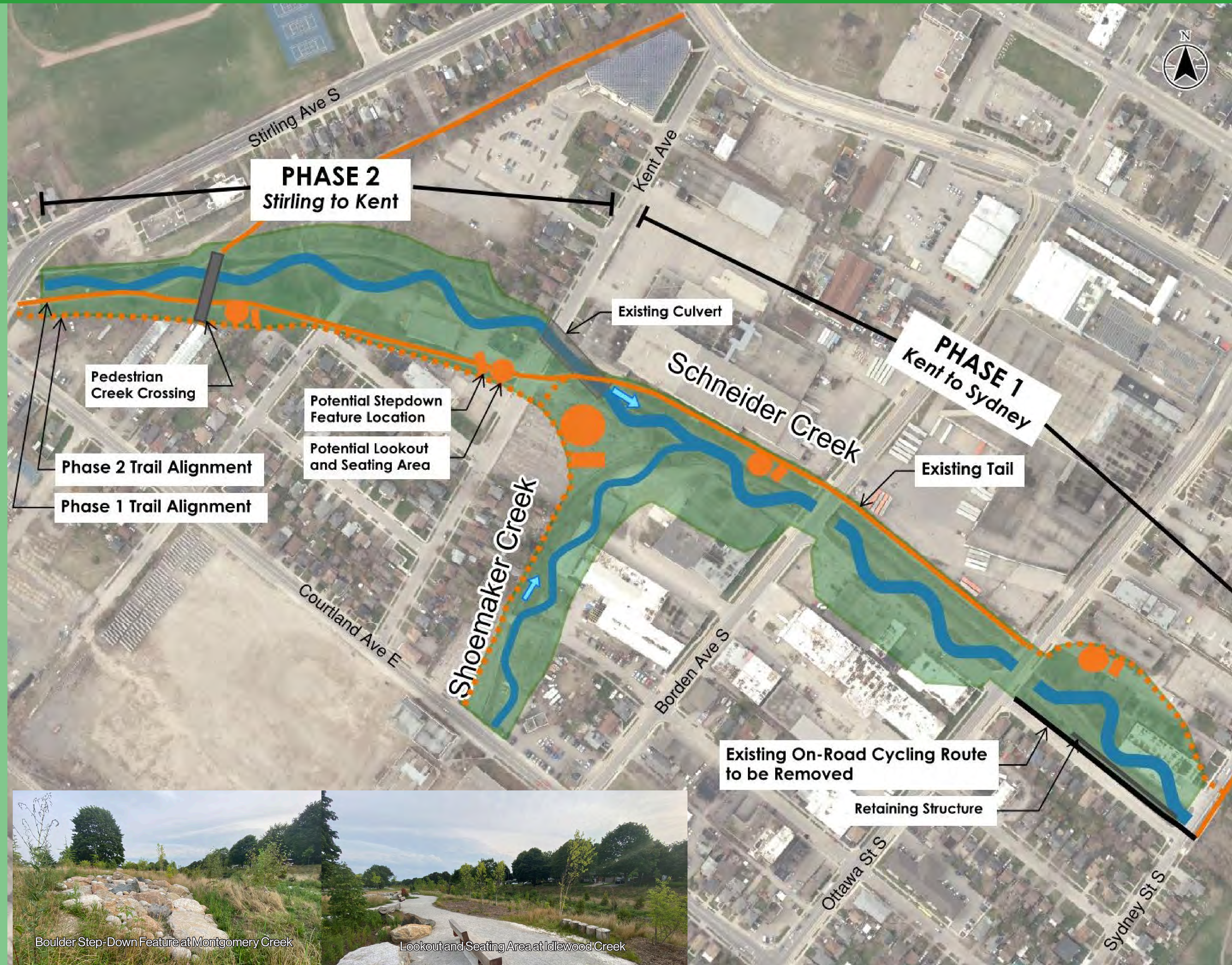


Alternative 2b: Naturalized Creek with Multi-Use Trail along a combination of the North and South side of Schneider Creek and West side of Shoemaker Creek. Added Trail Amenity Features up to three)

- Adds amenity features to the Alternative 2a alignment
- Amenity could include seating and step-down area for public access to greater connect with nature
- Costs more than Alternative 2a for amenities. Costs less than 1a due to maintenance of Iron Horse Trail segment.
- Will consider safety because of access into the valley (example: high flow, ticks)

What do you like about this alternative?

What don't you like about this alternative?



Evaluation of Alternative Solution Table

	Alternative 1a Multi-Use Trail along the South side of Schneider Creek and East Side of Shoemaker Creek	Alternative 1b Multi-Use Trail along the South side of Schneider Creek with Trail Amenity Features and Trail East side of Shoemaker Creek	Alternative 2a Multi-Use Trail along a combination of the North and South side of Schneider Creek and West side of Shoemaker Creek	Alternative 2b Multi-Use Trail along combination of the North and South side of Schneider Creek and West side of Shoemaker Creek. Added Amenity Features (up to three)
Natural Environment				
Socio-Economic & Cultural Environment				
Technical Environment				
Conclusion				Preliminary Preference

Least Net Benefit → → **Most Net Benefit**

Preliminary Preference: 2B) Naturalized Creek with Multi-Use Trail along a Combination of the North and South Side of Schneider Creek with Trail Amenity Features (up to Three) and West side of Shoemaker Creek



- Added amenities enhance the recreational value of IHT
- Provides opportunities to enjoy and interact with naturalized areas
- Largely maintains the existing IHT through the study area
- New section of trail along the north side between Ottawa St. & Sydney St.
- Remove the on-road cycling route along Nyberg St.
- Requires one less pedestrian creek crossing than Alternative 1

Environmental Considerations for Preliminary Preference



Biophysical Considerations:

- Potential bat habitat within the Project Limits
- Increase to other habitat and species diversity
- Reduce construction disturbance footprint by maintaining portion of existing Iron Horse Trail
- Removal of barriers to upstream fish passage, providing access to species currently located downstream of Sydney St. S.
- Availability of natural substrates to support invertebrates
- Increase riparian vegetation to provide habitat for birds while providing shade and organic debris to the creeks
- Re-connect Rockway Golf Course green space to Schneider Creek
- Re-connect creek to flood plain, which can provide improved water quality

Archaeological Considerations:

- Stage 2 Archaeological Assessment has been completed with no findings

Construction Phasing:

- Project is proposed to be completed in phases: downstream of Kent is proposed to be completed in Phase 1 and upstream of Kent is proposed to be done as part of Phase 2



Next Steps



- Incorporate PIC3 feedback and finalize preferred design concept
- Phase 4: Environmental Study Report (Winter 2024) – 30-day public review
- Field work continuing (Spring 2024)
- Detailed design and permitting including further consultation (2024-2025)
- Phase 1 Construction (2025-2026)
- Phase 2 Construction (TBD)



Thank you!



Chris Nechacov, C.E.T.

Project Manager

City of Kitchener

519-741-2200

SchneiderCreekEA@kitchener.ca



Steve Brown, MBA, P.Eng.

Project Manager

Stantec Consulting Ltd.

519-585-7446

SchneiderCreekEA@stantec.com



Appendix C Information Sheet





Schneider and Shoemaker Creek Naturalization Environmental Assessment Public Information Centre #3

Welcome and thank you for attending the second Public Information Centre (PIC) for the Schneider and Shoemaker Creek Naturalization Environmental Assessment. The purpose of this PIC is to present alternative design concepts, evaluate the alternative designs and share the preferred designed, answer public questions and obtain feedback.

For further information and to review the materials from tonight's PIC please visit the project website provided below:

www.engagewr.ca/SchneiderCreekEA



For additional comments or question please reach out to the project team:

Chris Nechacov, C.E.T.

Design & Construction Project Manager

City of Kitchener

Tel: 519-741-2200

Email: schneidercreekea@kitchener.ca

Steve Brown, MBA, P.Eng.

Project Manger

Stantec Consulting Ltd.

Tel: 519-585-7446

Email: schneidercreekea@stantec.com

